



## 3-PIECE SAFETY RAZORS

operating manual  
and safety instructions

## Content

- 1 About this document
- 2 Notes on safety
- 3 Potential hazards
- 4 Assembling, changing blades and storage of your MÜHLE Safety Razor
- 5 Scope of delivery, transportation, storage and installation
- 6 How to use your MÜHLE Safety Razor properly
- 7 Accessories and spare parts
- 8 Maintenance, cleaning and service
- 9 Sending the razor back to MÜHLE
- 10 Disposal

### 1 About this document

It is imperative that you read this operating manual completely and carefully, including the safety instructions. Improper use can cause serious injury. Always keep this operating manual at hand, do not throw it away!

## **!** WARNING

Read this manual before using this product. Never let others use the razor without having read the manual. Make sure the manual is included when the razor is handed on or sold to other users. Failure to follow the instructions and safety precautions in this manual can result in serious injury. Keep this manual in a safe location for future reference.



## This manual applies to the following razors

3-piece Safety Razors with closed comb

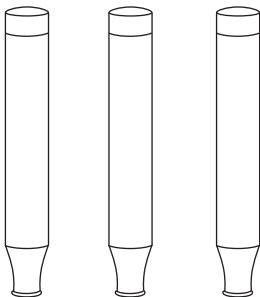
3-piece Safety Razors with closed comb stainless steel

3-piece Safety Razors with open comb

For more information about selecting the correct MÜHLE Safety Razor for your needs, go to:

[www.muehle-shaving.com](http://www.muehle-shaving.com)

razor  
handle  
(design  
may vary)



razor head  
bottom part



razor head  
top part



closed comb

closed comb  
stainless steel

open comb

## 2 Notes on safety

### **⚠ WARNING**

**Failure to observe the safety instructions can result in serious injury.**

- > Always observe the safety instructions in this manual.
- > Read all instructions before using this razor.

MÜHLE Safety Razors are not intended for use by persons with reduced physical, sensory or mental capabilities, or lack of experience and knowledge, unless they have been given supervision or instruction concerning the use of the razor and its accessory by a person responsible for their safety.

## 3 Potential hazards

Although the MÜHLE Safety Razor is safe and reliable when used and cared for properly, there are certain inherent safety hazards associated with the operation of the MÜHLE Safety Razor that should be avoided.

**Always use your MÜHLE Safety Razor properly.** Shaving should be done at a 30 degree shaving angle, without applying strong pressure on the area being shaved (see Section 6). For more information about how to properly use your MÜHLE Safety Razor, go to:  
**[tutorial.muehle-shaving.com](http://tutorial.muehle-shaving.com)**

To avoid bacterial infections, only use blades which were kept in cartridges. For reasons of hygiene and to achieve best results, the blades should be replaced after five (5) shaves (or five (5) days).

### 3.1 Skin lacerations

Check the razor blade for damage or deformation before use. Your skin may be injured if damage or deformation is present.

#### **⚠ CAUTION**

**Danger of skin laceration.  
Serious injuries and severe bleeding.**

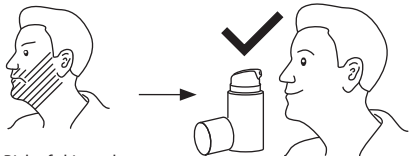
- > Observe the razor blade for damages or deformation before use.
- > Read 4.1 (Guideline for changing the blade) and 6.1 (Usage hints) carefully.



### 3.2 Razor blade burns

If your skin appears abnormal after shaving, stop using the razor and consult a dermatologist. Continued use may worsen your skin condition.

#### **⚠ CAUTION**



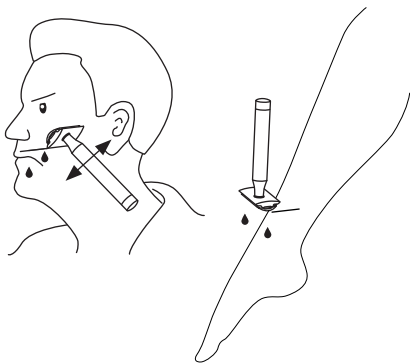
**Risk of skin rash.  
Serious reddening and burning skin.**

- > Use a sterile blade.
- > If skin reacts with irritation, apply a soothing after shave balm.

### 3.3 Razor blade bumps

Do not apply strong pressure to the skin. Prevent a jabbing motion and repetitive movements over the same skin area. Slide the razor lightly (only with the razor's net weight) over your skin. Do not use the razor on skin areas with spots or pimples. Do not use the razor on sensitive or delicate skin (this may cause injury) or when you are prone to allergies (this may cause an allergic reaction)

#### **⚠ CAUTION**



**Danger of wrong shaving performance.**

**Risk of allergies appearing.**

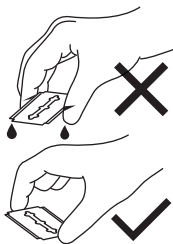
> Prevent using a jabbing motion and repeatedly moving over the same skin area.

## 4 Assembling, changing blades, and storing your MÜHLE Safety razor

Make sure that the razor head and handle are firmly attached to each other, but only tighten the screw to the extent that it can be unscrewed without much effort.

Make sure your hands are clean and dry.

### ⚠ WARNING



**BE VERY CAREFUL! Blades can cause serious injuries and severe bleeding.**

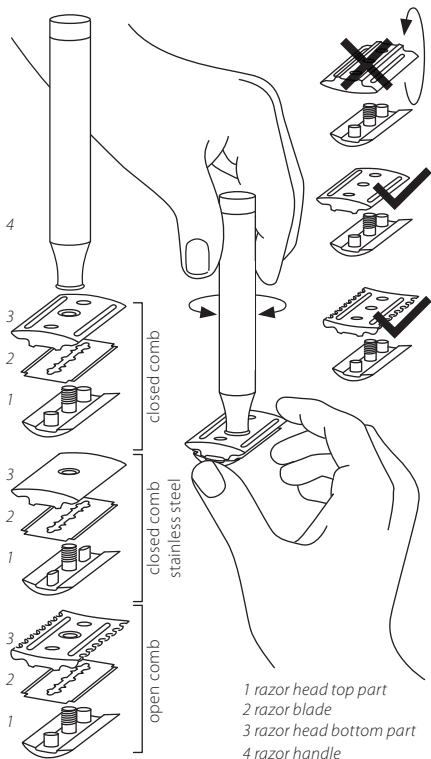
- > Use your thumb and index finger to grab the razor blade at its short, blunt sides.
- > Never touch the blades on its sharp edges!
- > Dry and clean your hands carefully before assembling the razor, handle and blade, and hold blades firmly to avoid dropping them.
- > Firmly attach razor head and handle to each other.

## 4.1 Changing the blade

The protrusion on the razor head is not a defect of the product, instead it serves the insertion/removal of the blade.: To safely change blades:

1. Put the razor in your hand, with the razor head showing down.
2. Hold the razor head in one hand and use the other hand to unscrew the razor handle.
3. Keep the razor head in your hand and leave the handle close to you.
4. Remove the razor head bottom part (perforated plate) from the razor head top part (slightly arched piece).  
Take a razor blade out of the cartridge. **BE VERY CAREFUL!**
5. Hold the razor head top part in one hand and use your thumb and index finger to grab the razor blade at its short, blunt sides.
6. Let the razor blade slide onto the three punched pins. **BE VERY CAREFUL!** The sharp blade edges should be overlapping from the razor head top part now.
7. Put razor head bottom part back onto the pins of the razor head top part. Make sure the beveled edge shows down to the razor head top part.
8. Use your free hand to take the razor handle and carefully screw it together with the blade-holding pieces. Make sure to only tighten the screw to the end that it can be unscrewed without much torque (see possible problems, which can occur under 6.1).
9. Inspect the condition of the razor before every use. Check the following points: > Does the razor head top part show any dents or defects? > Is the center screw on the razor head top part firmly attached to the razor top part? > Are any cracks visible? Is it bend or the thread worn off? > Are all pieces properly connected and fastened?
10. You are now ready to start shaving with your MÜHLE Safety Razor!

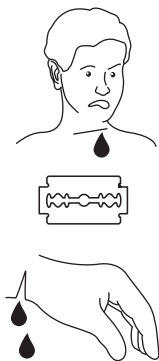
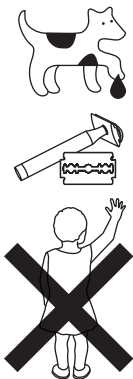




## 4.2 Storage

Make sure to store your razor in a safe and dry area, where it is out of reach for children and animals. Children are not able to handle a razor with the necessary care. This may cause serious accidents and injuries. Children and also animals could chew the razor, cut themselves or swallow down the blade.

### **⚠ DANGER**



**Danger of little children not handling a razor with the necessary precaution.**

**Serious injury or death!**

- > Store razor blades in safe cartridges.
- > Keep the razor and especially the blades out of reach from children and animals.

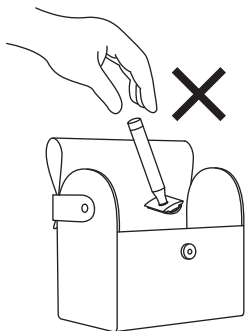
## 5 Scope of delivery, transportation, storage and installation

### 5.1 Unpacking/checking equipment and scope of delivery

After unpacking, please check the MÜHLE Safety Razor and its optional accessories for completeness and for damage. If a part is missing or damage has occurred, inform your vendor immediately.

### 5.2 Guidelines for safe transportation

Always keep your razor in a safe case when transporting it (for example in a cartridge, box etc.). Always remove the blade from the razor to transport both things separately, ideally in provided boxes/cartridges. Keeping the razor loose in a bag may cause severe accidents and injuries. Alternatively install the MÜHLE blade guard (item code KSR) in order to avoid accidents and injuries.



Item Code KSR

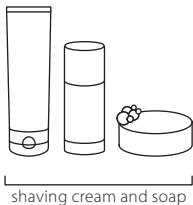
## 6 How to use your MÜHLE Safety Razor properly

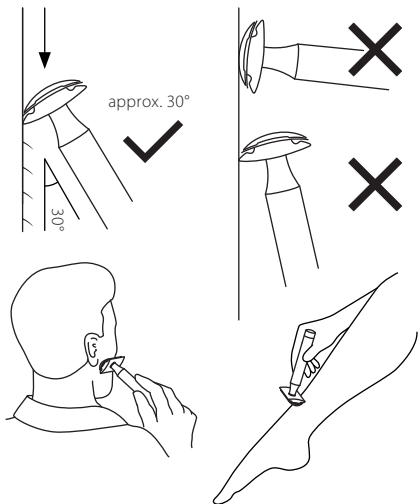


### 6.1 Usage hints

Ensure your skin is clean. Moisten the beard area, preferably with warm water, and lather it thoroughly with a brush. Always use a highly effective moisturizing shaving cream or shaving soap. This will allow the blade to slide easier over the skin.

We recommend the MÜHLE skin care line for a sensual and refreshing wet shave.





Hold the safety razor at a sharp angle (approx. 30°) to the skin. Start with the cheeks (or other area to be shaved) and allow the razor to slide over the skin, applying gentle pressure. Always shave in the direction of the beard growth (with the grain). When shaving curved areas (like your neck), stretch the skin tight with your free hand. Do not be discouraged by small cuts or grazes. Once you have familiarized yourself with the razor, they will rarely occur. Complete only one (1) shaving pass for each area. Please note, that different blades may differ in their sharpness. To learn about potential hazards, please read 3 – 3.3.

## 6.2 Problem: Reduced shaving performance

If the shaving performance is reduced, the following examples may cause the problem:

### ***The shaving head or blade is slightly rusty or worn.***

Stop using the MÜHLE Safety Razor and change the razor head or blade. The further use with rusty equipment can cause inflammations.

### ***Long hairs are obstructing the shaving head.***

Clean the cutters and guards with a brush to remove the hair. If the facial hair is too long and thick, the beard should be trimmed before shaving with the MÜHLE Safety Razor.

### ***The shaving head is dirty.***

The MÜHLE Safety Razor has not been cleaned well enough or has not been cleaned for a long time. Clean the shaver thoroughly before continuing shaving.

### ***The shaving head is damaged.***

Replace the shaving heads (follow instructions provided in 4.1).

### ***The blade is not assembled correctly with the razor.***

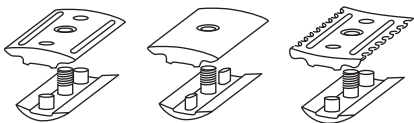
Loosen the blade and assemble it again with the razor head. A blade is determined by individual needs. If the results are still unsatisfying after adjusting the blade, change the type of blades (notice information provided in 4.1).

## 7 Accessories and spare parts

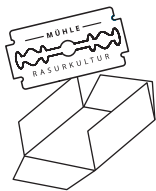
MÜHLE is only responsible for the safety features of the unit provided.

All maintenance, repairs and replacements must be done by MÜHLE authorized persons, using MÜHLE spare parts. The user is responsible for any risk arising from using unauthorized repairs or accessories.

MÜHLE razor head spare parts available



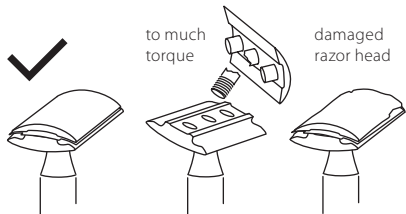
MÜHLE razor blades available



Item Code K1

MÜHLE shaving brushes and perfect fitting holders available separately.

### NOTICE



**Risk of destroying the MÜHLE Safety Razor.**

**Decreasing shaving results and destroying the razor.**

- > Do not pull the razor's head too tight into the thread.
- > Try to prevent the razor against falling.

### 8.1 Maintenance and service

Never modify, disassemble or repair the MÜHLE Safety Razor. This may cause unexpected injuries and damage/ destruction of the appliance. Contact the store where you bought the MÜHLE Safety Razor or a qualified service center for repair.

The use of different types of blades may change the performance of the razor and may deteriorate the shaving results. Some blades may decrease in their sharpness after a short time.

Impacts like falling or pulling the razor's thread too tight may cause a breaking of the thread, deformation or peeling away of the chrome coating.



## 8.2 Cleaning and disinfection

Make sure to always remove the blade from the razor before cleaning it! A MÜHLE Safety Razor is suitable for cleaning under running tap water. Regular cleaning ensures better shaving performance. Rinsing the shaving head under running tap water after each shave or using a mild detergent is an easy and fast way to keep it clean. Under no circumstance use benzine, thinner, acid or vinegar to clean the razor! It may cause malfunction, cracks or discoloration of the parts. Dab off water with a towel and let the razor dry naturally.

Rinse the blade under tap water and dry it carefully with a towel. To avoid bacterial infections, only use blades which were kept in cartridges. For reasons of hygiene and to achieve best results, the same blade should only be used for five practical applications.

### **⚠ WARNING**



**Danger of cuts and bacterial infections.**

**Injuries, severe bleeding on hands and malfunction of the razor.**

> Do always remove the razor from the blade during cleaning the equipment.

> Under no circumstance use benzine, thinner, acid or vinegar to clean the razor!

## 9 Sending the razor back to MÜHLE

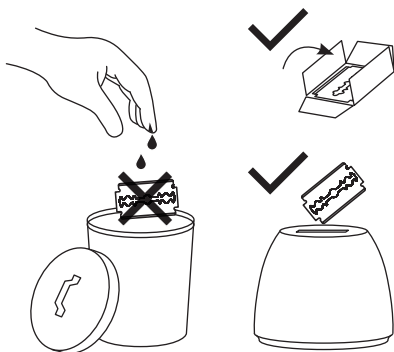
If you send the product back to MÜHLE or your distributor, make sure to specify the following information:

- MÜHLE product type and serial number (or serial number used by your distributor)
- Include a copy of the sales receipt
- Name and address of the distributor from which you bought the MÜHLE product
- Exact description of fault, defect or injury which was caused by a defect
- Your full address and possibility to get in contact with you (phone number, eMail address)

## 10 Disposal

If recycling is possible, please dispose the different packing elements (paper, plastic, metal etc.) for recycling. Broken blades should be carefully disposed in suitable cartridges or other transport cases. Throwing away a blade without a protective covering may cause serious injury.

### **⚠ WARNING**



Item Code BB

**Danger of cutting.**

**Serious cutting injuries with severe bleeding.**

> Put the used blade in a protective cover (cartridge) before disposing it in the garbage.

## Supplier

Hans-Jürgen Müller GmbH & Co. KG  
(referred to as "MÜHLE Shaving")

## Address

Hauptstraße 18  
08328 Stützengrün (Germany)

## Product

MÜHLE Safety Razor

## Type

3-piece Safety Razors with closed comb  
3-piece Safety Razors with closed comb stainless steel  
3-piece Safety Razors with open comb



#safetyrazor #rasurkultur

## Translation

tutorial.muehle-shaving.com



## MÜHLE Shaving

Hans-Jürgen Müller GmbH & Co. KG  
Hundshübel Hauptstraße 18  
08328 Stützengrün (Germany)  
Phone +49 (0)37462-652-0  
Fax +49 (0)37462-652-18  
info@muehle-shaving.com